

FORM G - STREETSCAPE

Assessor's Sheets

USGS Quad

Area(s)

Form Numbers

Massachusetts Historical Commission  
80 Boylston Street  
Boston, Massachusetts 02116

70

Marlborough

H; R

491, 490



Town Marlborough

Place (neighborhood or village) \_\_\_\_\_

Rice Farm subdivision

Addresses (inclusive) \_\_\_\_\_

43 and 45 Washington Street

Range of Dates or Period ca. 1870-1889

Predominant Architectural Styles/Forms \_\_\_\_\_

vernacular Italianate/Queen Anne gable-end-and-wing houses

Alterations one door and window replaced at

43 Washington

General Condition good

Acreage less than one acre

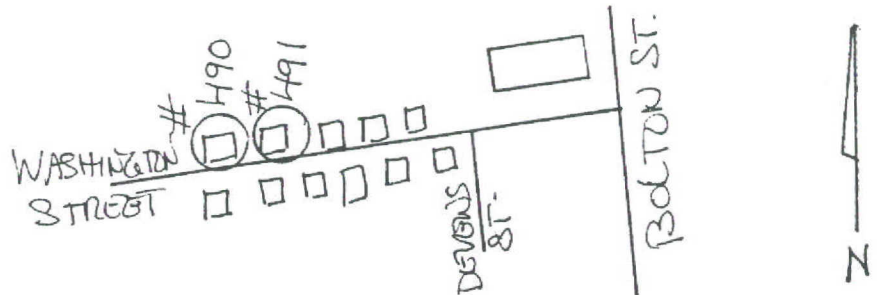
Recorded by Anne Forbes, consultant

Organization Marlborough Historical Comm.

Date (month/day/year) 9/10/94

Sketch Map

Draw a map of the streetscape indicating properties within it. Number each property. Label streets including route numbers, if any. Attach a separate sheet if space here is not sufficient. Indicate North with an arrow.



## STREETSCAPE FORM

### ARCHITECTURAL DESCRIPTION *see continuation sheet*

*Describe important architectural features and evaluate in terms of other streetscapes and similar buildings in the community.*

These two houses are among the most well-preserved examples of the prevailing house-type built in the "Middle Village" area in the latter part of the nineteenth century--the 2 1/2-story, side-hall-entry, three-bay gable-end house. Here the type is found with a two-story side wing. Both houses stand on brick foundations and have kept their clapboard siding. Both also have the 2-over-2-sash windows with molded surrounds, and the narrow corner boards and molded, boxed cornices that were typical of the vernacular Italianate style. The 1880's house, #43, retains some of its paired cornice brackets and a heavy, bracketed canopy at the main entry. The chamfered, square posts at the facade porch on the wing, as well as the polygonal bay window on the main facade are also typical Italianate features.

The wraparound porch at the earlier house, #45 Washington, which was built in about 1870, also has square, chamfered posts, but its lacy saw-cut brackets are more typical of the later Queen Anne style. Both houses have glass-and-panel doors.

### HISTORICAL NARRATIVE *see continuation sheet*

*Explain the history of this streetscape, and how it relates to the overall development of the community.*

These two houses are an excellent illustration of the type of development found in all sections of the Rice Farm subdivision, which was first laid out by Major Henry Rice in 1855. (See Area Form H: "Middle Village.") Over the years, shoe-manufacturer Samuel Boyd purchased many of the lots, and either sold the land itself, or put up houses for sale, and after Major Rice's death in 1867, he bought much of the remaining Rice real estate holdings.

The earlier of these two houses is **45 Washington**, which was standing by 1871. Typical of the prevailing Irish-American ownership in the neighborhood, at that time it belonged to **O.F. Cavanaugh**. By 1875, and through at least 1889, it belonged to members of the **McCarty** family. In 1897, two adult members of the **O'Brien** family are listed here, both employed in professions typical of the residents of this neighborhood. **Dennis E. O'Brien** was a shoe worker, and **Dennis W. O'Brien** was listed as a laborer.

**43 Washington Street** was built in the 1880's at the southern end of a double lot of the Rice Farm subdivision; like the three lots just east of it, this one extended through to Rice Street. The owner for many years was **Thomas Fahey**.

### BIBLIOGRAPHY and/or REFERENCES *see continuation sheet*

Maps and atlases: 1871, 1875, 1878, Pictorial Marlborough 1879, 1889.  
Marlborough directories and tax valuations.

Recommended for listing in the National Register of Historic Places. *If checked, you must attach a completed National Register Criteria Statement form.*

**INVENTORY FORM CONTINUATION SHEET**

Community

Property

Marlborough 43 and 45 Washington  
StreetMassachusetts Historical Commission  
80 Boylston Street  
Boston, Massachusetts 02116Area(s)  
H; RForm Nos.  
491, 490**STREETSCAPE DATA SHEET**

<u>MHC#</u>	<u>Parcel #</u>	<u>Street Address</u>	<u>Historic Name</u>	<u>Date</u>	<u>Style/type</u>
491	70-16	43 Washington Street	Fahey House	1880's	Italianate
490	70-14	45 Washington Street	Connery House	ca. 1870	Italianate/ Q. Anne